

# THE COLLECTIVE

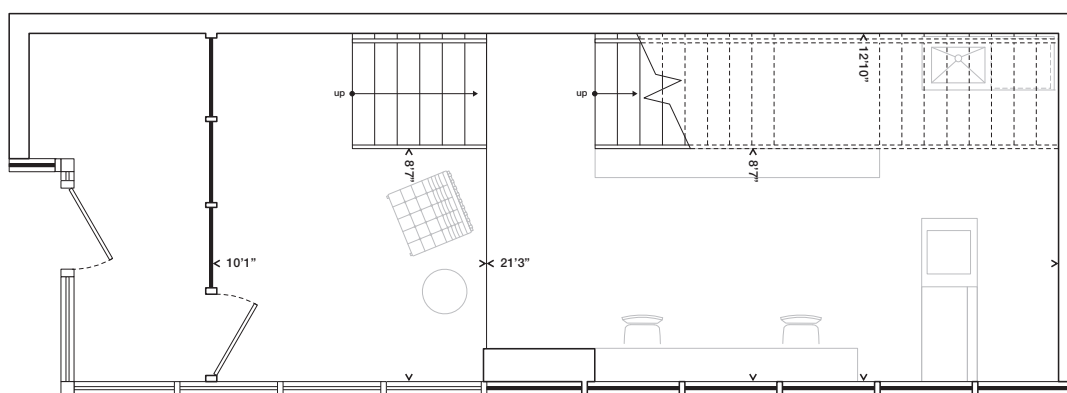
COMMERCIAL LOFT SPACES




**COMMERCIAL LOFT**  
**EMPLOYEES 27**  
**VISITORS 13**



SECOND LEVEL



GROUND LEVEL

## PARLIAMENT & CO

# 202

SOUTH AND EAST FACING  
 SECOND LEVEL 4,520 SF  
 GROUND LEVEL 606 SF  
 TOTAL 5,126 SF

